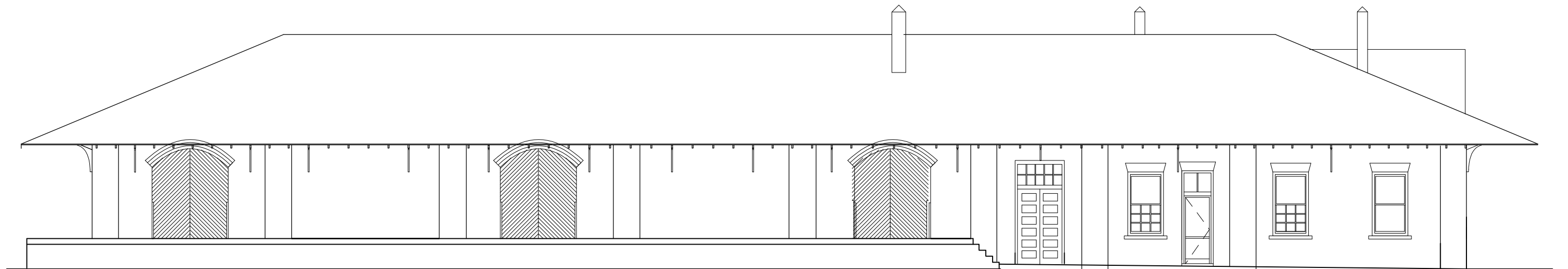
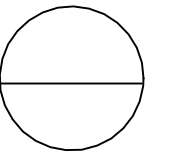


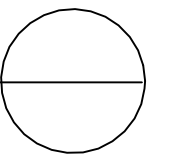
SOUTH ELEVATION — EXISTING CONDITIONS

SCALE: 3/32" = 1'-0"



NORTH ELEVATION — EXISTING CONDITIONS

SCALE: 3/32" = 1'-0"



VINELAND STATION
WHITEVILLE, NORTH CAROLINA
DAVID E. GALL, ARCHITECT, P.A.
JULY 2002