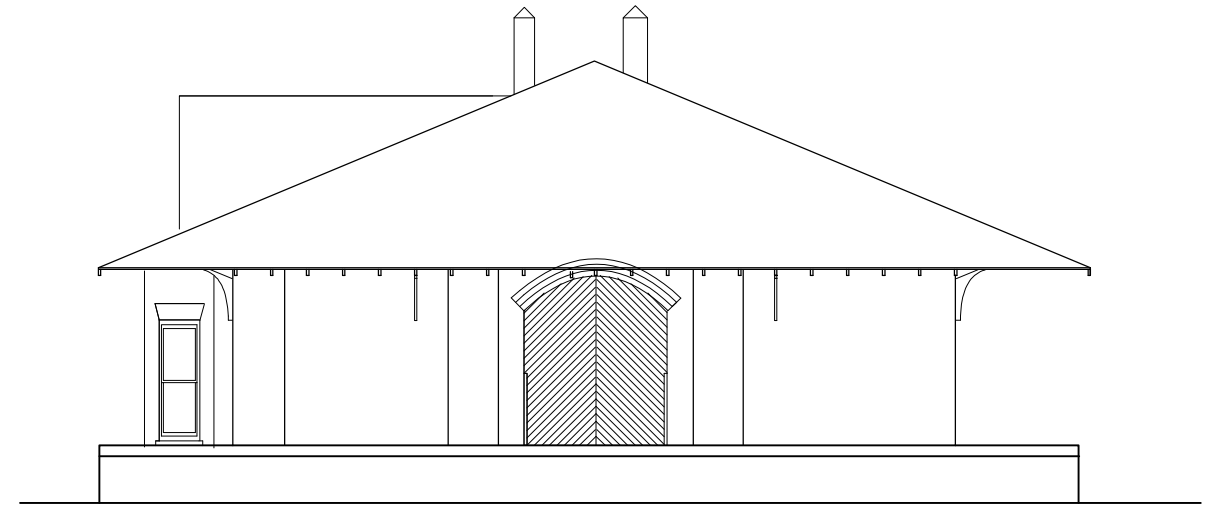
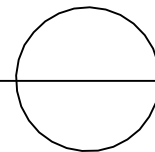




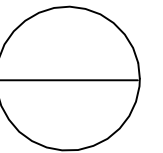
WEST ELEVATION—EXISTING CONDITIONS

SCALE:  $3/32'' = 1'-0''$



EAST ELEVATION—EXISTING CONDITIONS

SCALE:  $3/32'' = 1'-0''$



VINELAND STATION  
WHITEVILLE, NORTH CAROLINA  
DAVID E. GALL, ARCHITECT, P.A.  
JULY 2002